

Trout Lake Regional Rally



Trout Lake Regional Rally



Safety Plan

September 23-24, 2023



SPORTS
DEVELOPMENT
GROUP

GROUPE DE
DÉVELOPPEMENT
SPORTIF

Presented by:



Trout Lake Regional Rally

Contents

Part A Organization Information.....	3
A-1 Organizing Club.....	3
A-2 Dates.....	3
A-3 Officials of the Event:.....	3
A-4 Communications:.....	4
A-5 Safety Requirements	4
Part B Stage Details.....	4
B-1 Stage Details	4
Stages 1, 2 and 3	4
Stages 4, 5 and 6	Error! Bookmark not defined.
B-2 Stage Preparation Schematics	6
Stages 1, 2 and 3	6
Stages 4, 5 and 6	6
Part C Emergency Plan Details	7
C-1 Protocols for a participant incident/stage stoppage.....	7
C-2 An outline of event plans.....	7
Medical Services.....	7
Medical Services Transportation	7
Placement/Moving of Medical Services During Event.....	7
C-3 Procedure for serious incidents.....	8
Part D Maps.....	8
D-1 Ledwidge Lookoff 2023	8
HQ and Transit	9
D-2 Stage Maps	10
Stages 1-3.....	10
Stages 4-6.....	10
Part E Other Event Documentation	11
Part F Protocols.....	11

Trout Lake Regional Rally

Part A Organization Information

A-1 Organizing Club

Rally organized by Bluenose Autosport Club (BAC)
P.O. Box 2724 DEPS
Dartmouth, NS B2W 4R4

Rate Code R3 – One Day Regional

The Trout Lake Regional Rally 2023 will be held under the Rally General Competition Rules of the Canadian Association of Rallysport (CARS), the current CARS Rally Regulations, the Rally Regulations of the Atlantic Region, the current Bluenose Autosport Club (BAC) Rally Regulations, and these Supplementary Rules and Regulations. These documents are available from the following and will be available for scrutiny at the start.

CARS: Box 300, Turner Valley, AB, T0L 2A0 855-640-6444

ARMS: Regional Rally Director, Mal Swann atlantic@carsrally.ca

CARS Rules: <https://carsrally.ca/cars-info/rules/>

A-2 Dates

September 23-24, 2023

A-3 Officials of the Event:

Event Coordinator	Mel Smith	902-478-7988	Mel.smith@ns.sympatico.ca
Administrative Coordinator	Barb Coleman	902-476-9496	Blcoleman42@yahoo.ca
Clerk of Course	Clarke Paynter		clerkofcourse@bluenoseautosport.ca
Chief Control Marshall	Paul Delaney		chiefmarshall@bluenoseautosport.ca
Steward	TBA by CARS		
Route Master	Mel Smith / James Partridge	902-478-7988	Mel.smith@ns.sympatico.ca
Scoring	Barb Coleman / RallyScoring.com	902-476-9496	Blcoleman42@yahoo.ca
Registrar	Sherry Holt		treasurer@bluenoseautosport.ca
Scrutineer	Kevin Partridge	902-489-8917	scrutineer@bluenoseautosport.ca
Emergency Response	MRTS Kevin Joudrey	902-751-1552	kjodrey@shawbrick.ca
Chief Radio Marshal	TBD		
Course Vehicles	Tom Wood	902-994-1179	Tom.a.wood@hotmail.com
Chief of Security	Mel Smith	902-478-7988	Mel.smith@ns.sympatico.ca
Media Coordinator	Libby Partridge		commsdirector@bluenoseautosport.ca

Trout Lake Regional Rally

A-4 Communications:

Communication will take place via the 2m amateur radio frequencies. The talk in repeater is VE1HCA, 146.910 - We will use the VE1PAR repeater on the course (145.470 -) with a backup simplex frequency of 146.580Mhz. CB radios will also be issued when licensed operators are insufficient and will operate on channel 16. The Clerk of Course will have access to both forms of radio.

Net Control, will be at Headquarters. A very experienced operator will be working with the Clerk of Course.

There will be amateur radio operators at the start and finish of each stage, as well as an operator placed at a traffic control point mid-stage. Radio operators will also accompany cars 0 and 99 during the event. The emergency response team/vehicle will also have a radio operator.

There is virtually no cell phone coverage in the area, so they cannot be relied upon for any communications.

Should the 2m radio net fail, and cellular signal is unobtainable, a significant number of workers and vehicles are equipped with CB radio which will be powered at all times and tuned to channel 16.

A-5 Safety Requirements

All access points to the stages will be controlled by volunteers prior to the start of the event, and continuously until full completion. Course opening will confirm that all access controls are in position prior to stage start.

All event marshals and officials should wear CARS marshal vests when in stages/restricted areas at all times.

Photographers will be permitted to be in positions on the course designated by the stage captains as safe at their discretion. All photographers will register with the organizer prior to the event, and no unauthorized photographers will be permitted access to the stages.

Part B Stage Details

B-1 Stage Details

Three stages, ranging from 4.5k to 17.8k per stage.

The entire route lies within:

Latitude: 44° 47' 32" to 44° 57' 37" N

Longitude: 64° 53' 09" to 64° 40' 21" W

Altitude from 173 m to 243 m

Stage 1 (and Stage 6 in reverse)

Stage number(s)/Name(s)	1
Stage distance (start line to flying finish line)	4.5 km

Trout Lake Regional Rally

Stage surface base (gravel/dirt, pavement and percentage if pavement)	Single lane varied surfaces, ranging from smooth gravel to packed soil
Stage history (number of years used, fastest average speed attained)	Never been used before
Name of Stage Captain/Commander	TBD
Name of Assistant Stage Captain/Commander	TBD
Road ownership	DNR property
Permission granted by (name of person responsible)	Cory Isner
Official Spectator Areas (<i>number and location</i>)	n/a
Unofficial Spectator Areas	n/a
Timing (start and finish)	2
Radio	2 (start, finish)
Traffic Control (Security) at start, finish, interior	1 start 1 finish TC 1-2
Spectator (Security)	n/a

Stage 2 (and Stage 5 in reverse)

Stage number(s)/Name(s)	2
Stage distance (start line to flying finish line)	7.7 km
Stage surface base (gravel/dirt, pavement and percentage if pavement)	Single lane varied surfaces, ranging from smooth gravel to packed soil
Stage history (number of years used, fastest average speed attained)	Never been used before
Name of Stage Captain/Commander	TBD
Name of Assistant Stage Captain/Commander	TBD
Road ownership	DNR property
Permission granted by (name of person responsible)	Cory Isner
Official Spectator Areas (<i>number and location</i>)	n/a
Unofficial Spectator Areas	n/a
Timing (start and finish)	2
Radio	2 (start, finish)
Traffic Control (Security) at start, finish, interior	1 start 1 finish TC 1-7
Spectator (Security)	n/a

Stage 3 (and Stage 4 in reverse)

Stage number(s)/Name(s)	3
Stage distance (start line to flying finish line)	17.8 km
Stage surface base (gravel/dirt, pavement and percentage if pavement)	Single lane varied surfaces, ranging from smooth gravel to packed soil
Stage history (number of years used, fastest average speed attained)	Never been used before
Name of Stage Captain/Commander	TBD
Name of Assistant Stage Captain/Commander	TBD

Trout Lake Regional Rally

Road ownership	DNR property
Permission granted by (name of person responsible)	Cory Isner
Official Spectator Areas (<i>number and location</i>)	n/a
Unofficial Spectator Areas	n/a
Timing (start and finish)	2
Radio	4 (start, finish and 1 at TC9 and TC20)
Traffic Control (Security) at start, finish, interior	1 start 1 finish TC 1-23
Spectator (Security)	n/a

B-2 Stage Preparation Schematics

Spectators will not be permitted at this event. There are no official spectator areas, nor will course workers permit spectating. The event has not been advertised for spectating.

Stage 1 (and Stage 6 in reverse)

	Latitude	Longitude	Special Setup Instructions
Start Control	44 56 46 N	64 44 24 W	
Start Line	44 56 45 N	64 44 25 W	
Traffic Control 1	44 56 43 N	64 45 03 W	
Traffic Control 2	44 56 22 N	64 46 23 W	
Flying Finish	44 56 13 N	64 47 23 W	
Stop Control	44 56 12 N	64 47 23 W	

Stage 2 (and Stage 5 in reverse)

	Latitude	Longitude	Special Setup Instructions
Start Control	44 55 26 N	64 48 25 W	
Start Line	44 55 14 N	64 48 40 W	
Traffic Control 1	44 55 09 N	64 48 54 W	
Traffic Control 2	44 54 56 N	64 50 19 W	
Traffic Control 3	44 54 06 N	64 50 53 W	
Traffic Control 4	44 53 57 N	64 51 02 W	
Traffic Control 5	44 53 47 N	64 51 26 W	
Traffic Control 6	44 53 47 N	64 51 30 W	
Traffic Control 7	44 53 31 N	64 51 55 W	
Flying Finish	44 52 55 N	64 52 38 W	
Stop Control	44 52 54 N	64 52 40 W	

Stage 3 (and Stage 4 in reverse)

	Latitude	Longitude	Special Setup Instructions
Start Control	44 52 40 N	64 52 40 W	
Start Line	44 52 40 N	64 52 39 W	
Traffic Control 1	44 52 41 N	64 52 25 W	
Traffic Control 2	44 52 42 N	64 51 07 W	
Traffic Control 3	44 52 41 N	64 50 53 W	

Trout Lake Regional Rally

Traffic Control 4	44 52 41 N	64 50 53 W	
Traffic Control 5	44 52 38 N	64 50 49 W	
Traffic Control 6	44 52 01 N	64 50 11 W	
Traffic Control 7	44 51 53 N	64 49 57 W	
Traffic Control 8	44 51 09 N	64 49 51 W	
Traffic Control 9 / Radio	44 50 47 N	64 49 39 W	
Traffic Control 10	44 50 45 N	64 49 39 W	
Traffic Control 11	44 50 21 N	64 49 32 W	
Traffic Control 12	44 50 09 N	64 49 28 W	
Traffic Control 13	44 50 00 N	64 49 12 W	
Traffic Control 14	44 49 55 N	64 49 03 W	
Traffic Control 15	44 49 43 N	64 49 05 W	
Traffic Control 16	44 49 37 N	64 49 06 W	
Traffic Control 17	44 49 27 N	64 49 07 W	
Traffic Control 18	44 49 14 N	64 49 06 W	
Traffic Control 19	44 48 21 N	64 48 34 W	
Traffic Control 20 / Radio	44 47 44 N	64 48 12 W	
Traffic Control 21	44 48 36 N	64 46 29 W	
Traffic Control 22	44 48 41 N	64 46 21 W	
Traffic Control 23	44 48 59 N	64 45 48 W	
Flying Finish	44 49 07 N	64 45 29 W	
Stop Control	44 49 11 N	64 45 14 W	

Part C Emergency Plan Details

C-1 Protocols for a participant incident/stage stoppage

- The participant first on scene of an incident makes their way to the next radio point.
- Radio operator contacts HQ and Emergency Mobile Response
- Rally Organizer or Clerk of the Course makes the decision to stop the event.
- HQ Radio operator informs Start/Finish radio operators of stoppage.
- Emergency Mobile Response makes the decision to call additional emergency services if required.

C-2 An outline of event plans

Medical Services

The nearest hospital is Soldiers Memorial Hospital, 462 Main Street, Middleton, NS, 902-825-3411. The Emergency Department at this location is operational from Tuesday to Friday, from 7:30 am to 1:30 pm. The next closest hospital is Valley Regional Hospital, 150 Exhibition Street, Kentville, NS, 902-678-7381. The Emergency Department at this location is operational 24/7.

Medical Services Transportation

In the event that transport of a patient is required, the mobile emergency response unit will coordinate with 911 to arrange ambulance service.

Placement/Moving of Medical Services During Event

Mobile emergency response will be located at a central point of the stages during the event. Two medical personnel with medical/fire/extraction vehicle will be on site. Medical team is experienced with rally/race cars and personal safety equipment. Rally teams will run at 2 min intervals during the event and will act as first responder for any incidents occurring on stage. The sweep vehicle will follow the last rally car and ensure competitors are safely off stage.

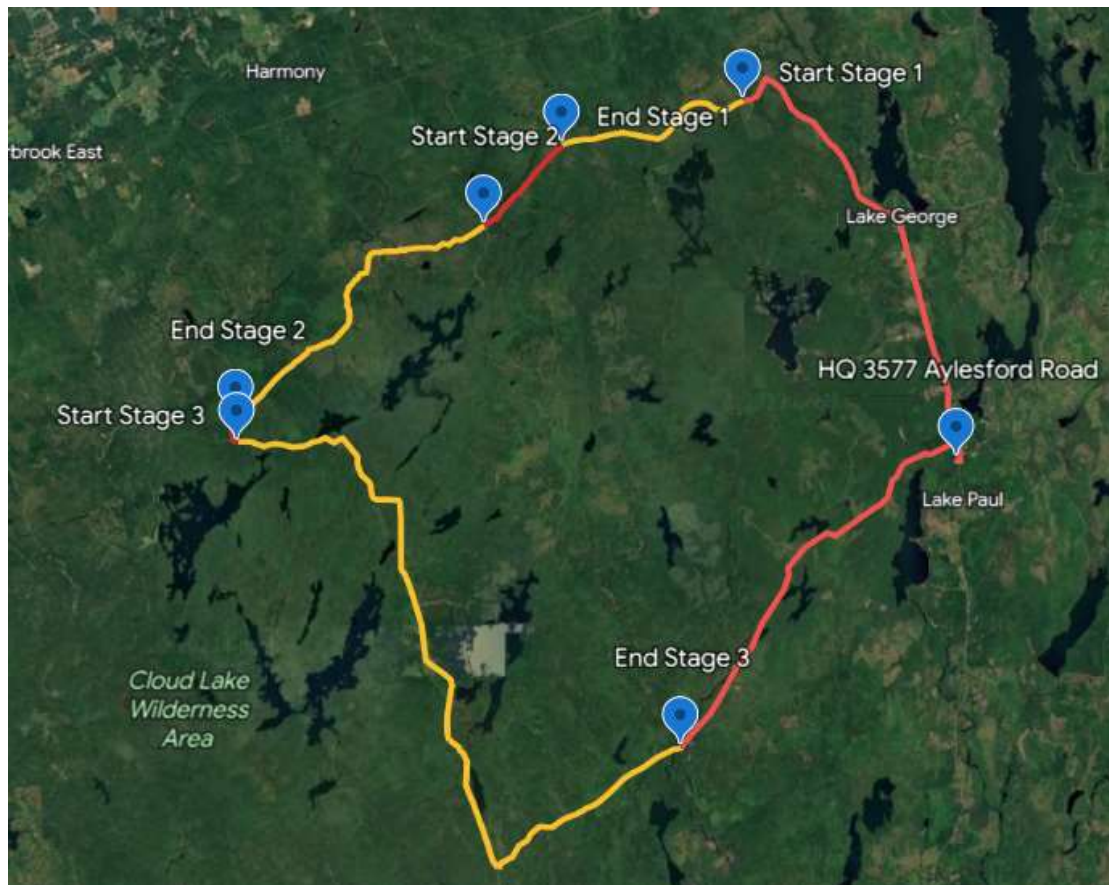
Trout Lake Regional Rally

C-3 Procedure for serious incidents

- Mobile Emergency Service personnel will initiate the requirement for additional emergency responders (call to 911), and will inform HQ of the requirement via radio control.
- Rally Organizer or Clerk of the Course will delegate someone to meet the emergency responders and with a vehicle and a radio operator to lead them to the scene.
- Rally Organizer or Clerk of the Course will work with the Communications Director on appropriate media messaging.

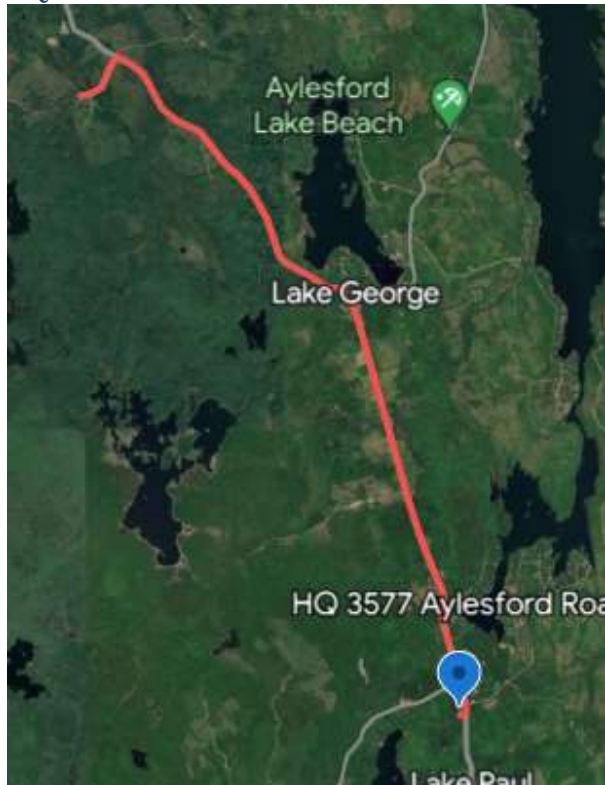
Part D Maps

D-1 Trout Lake 2023



Trout Lake Regional Rally

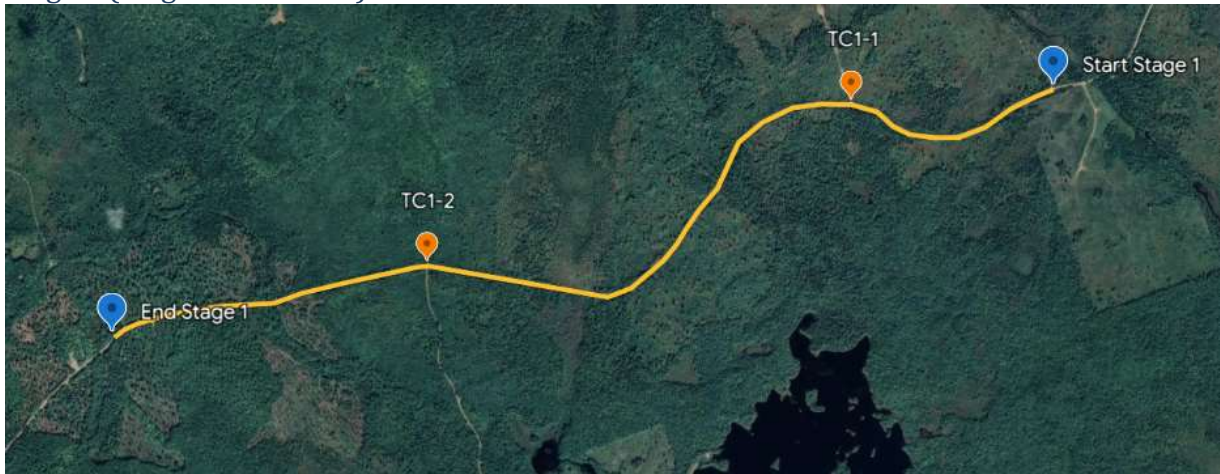
HQ and Initial Transit



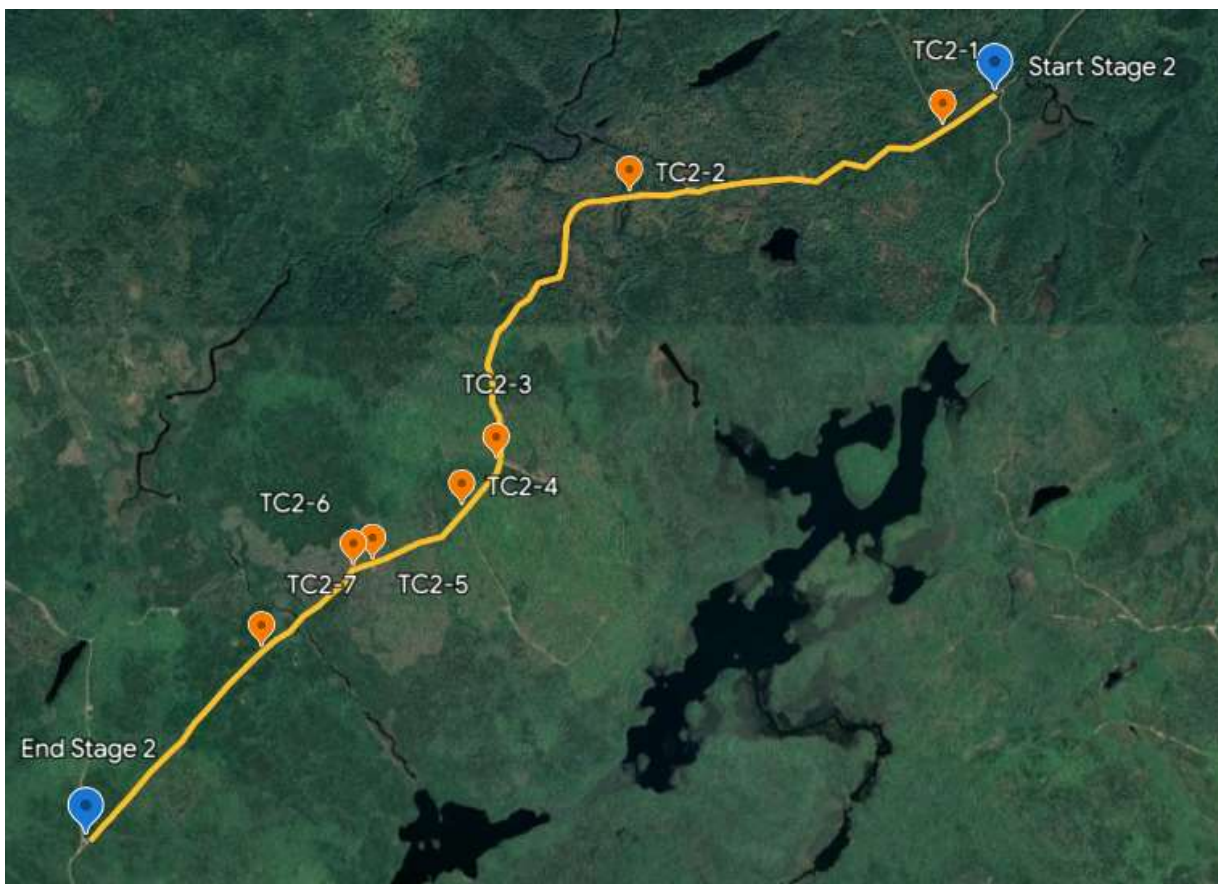
Trout Lake Regional Rally

D-2 Stage Maps

Stage 1 (Stage 6 in reverse)

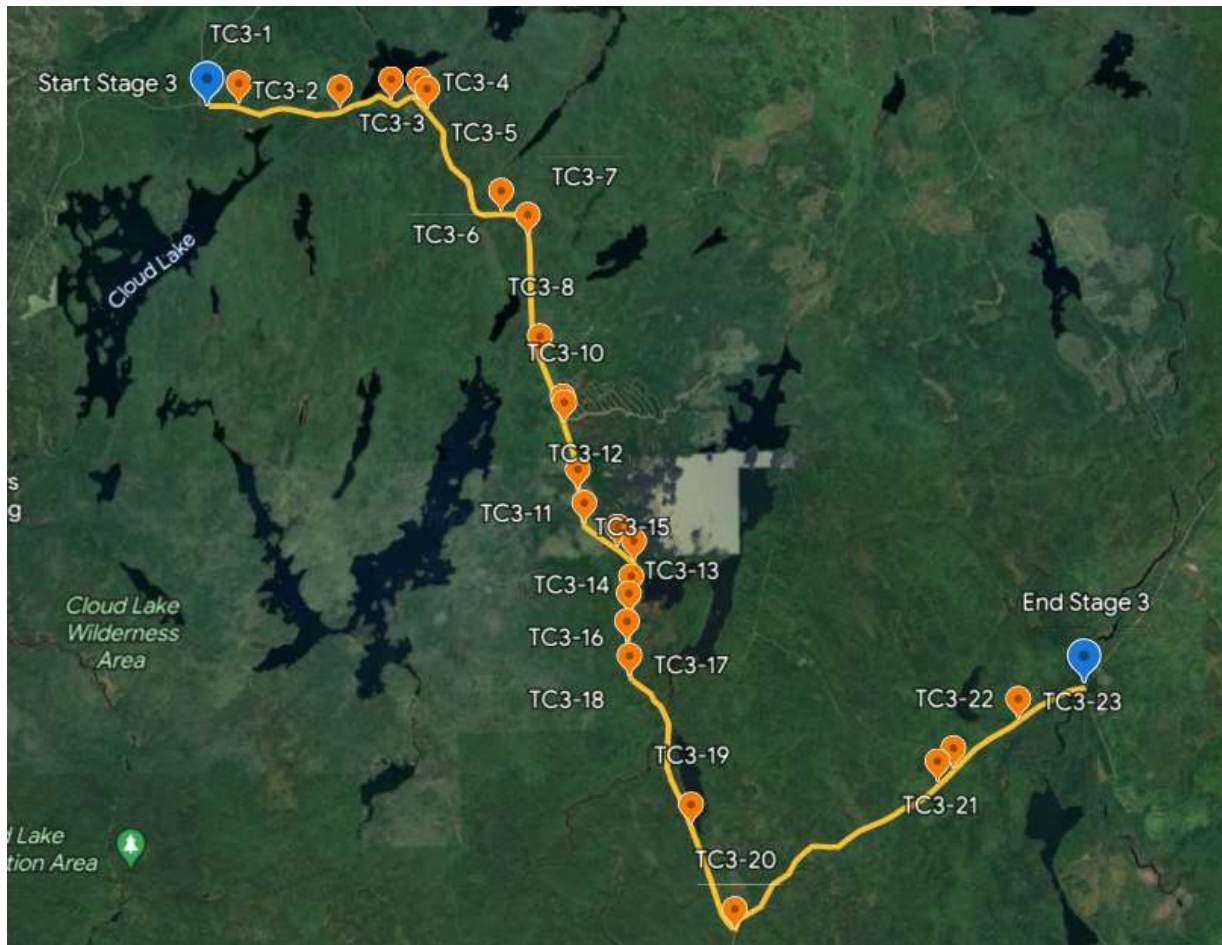


Stage 2 (Stage 5 in reverse)



Trout Lake Regional Rally

Stage 3 (Stage 4 in reverse)



Part E Other Event Documentation

Service will be located at 44 52 41 N 64 40 49 W. This site will also act as Rally HQ. The competitor fueling area will be located at the service area, situated in close proximity to the emergency vehicle, marked with cones and fire extinguishers present. Competitors are not permitted to refuel outside this area.

Part F Protocols

The entire safety package is to be supplied to the NSM, the stewards, official vehicles and members of the organizing committee including the Chief of Security (Safety Officer). At minimum, the Following parts of the safety plan should be given to the stage preparation crews and the Stage Captain and Assistant Stage Captain: Parts A, B, C, D-2 and E (if applicable). Note: If some information is unavailable before submission deadlines, then that information should be given to the NSM and stewards before the start of the event.